

39

27

090°

270°

39

30

090°

270°

MSA 25NM NDB(L) CDF

27

24

090°

270°

20

21

090°

270°

MSA 10NM NDB(L) CDF

APP 119.155, 125.855

CARDIFF APPROACH

AD ELEVATION 220

TWR 133.105

CARDIFF TOWER

THR ELEVATION 205

RAD 125.855

CARDIFF RADAR

OBSTACLE ELEVATION 1299 AMSL (1094) (ABOVE THR)

119.155 (LARS)

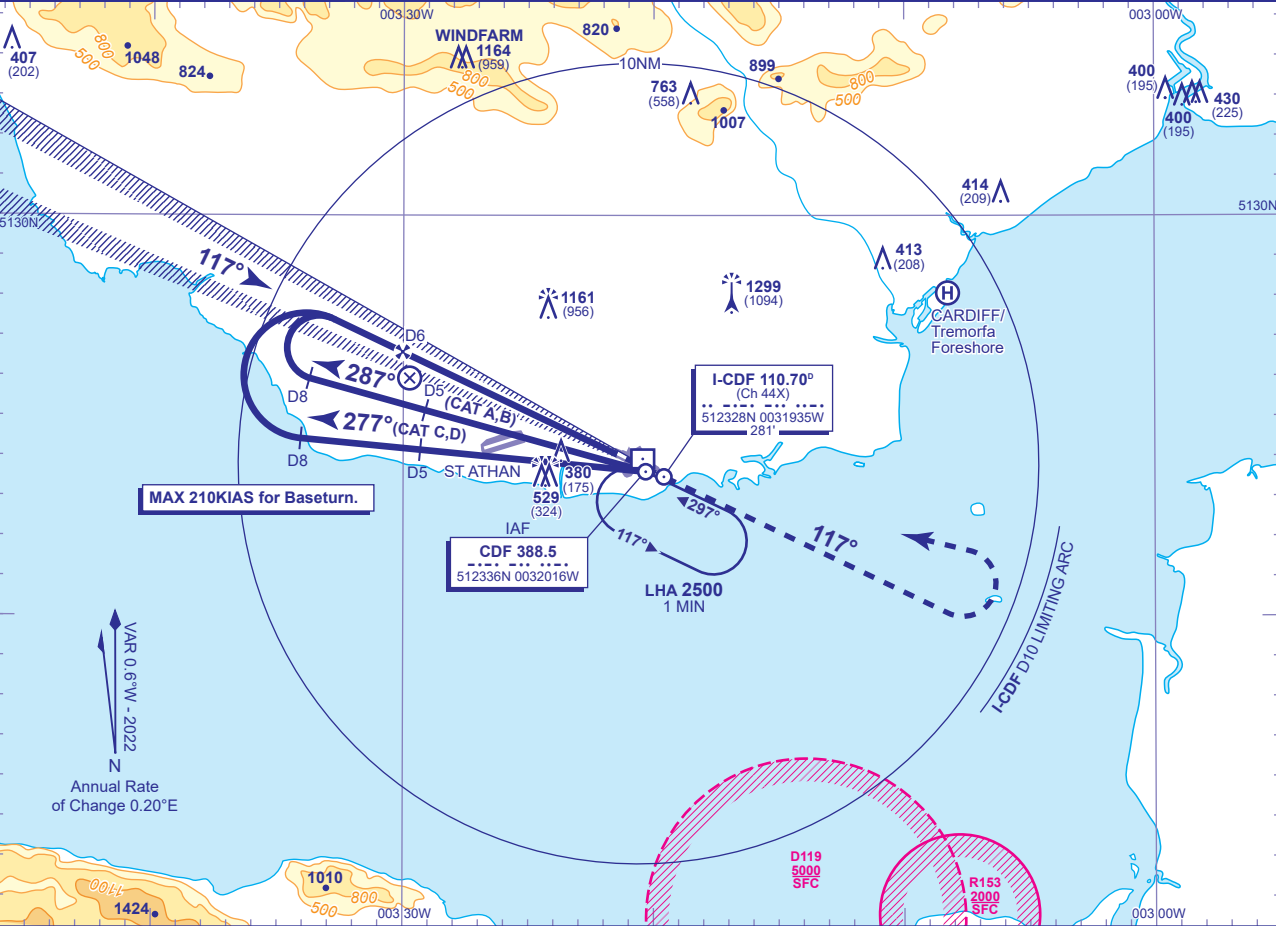
ATIS 132.480

CARDIFF INFORMATION

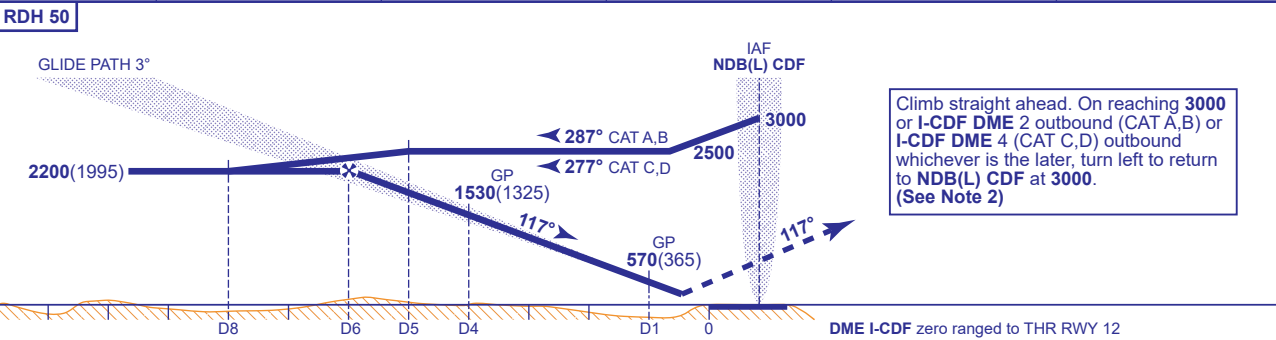
BEARINGS ARE MAGNETIC

CARDIFF ILS/DME/NDB(L) RWY 12 (ACFT CAT A,B,C,D)

TRANSITION ALTITUDE 6000



RECOMMENDED PROFILE GLIDE PATH 3°, 320FT/NM					
DME I-CDF	5	4	3	2	1
ALT(HGT)	1850(1645)	1530(1325)	1210(1005)	890(685)	570(365)



Aircraft Category		A	B	C	D	Rate of descent	G/S KT	160	140	120	100	80
OCA (OCH)	CAT I	350(145)	360(155)	373(168)	386(181)		FT/MIN	850	740	640	530	420
VM(C)OCA (OCH AAL)	Total Area	680(460)	820(600)	1560(1340)	1690(1470)							
	SW of RWY 12/30	680(460)	820(600)	920(700)	920(700)							

AIRCRAFT UNABLE TO RECEIVE DME I-CDF
Advise ATC. Radar ranges will be provided at 5NM and 8NM outbound and at 6NM and 4NM inbound.

NOTE 1 Subject to ATC approval, aircraft inbound to NDB(L) CDF and receiving DME I-CDF may descend to 3000 after passing I-CDF DME 10.
NOTE 2 Aircraft to remain within I-CDF DME 10 during the missed approach turn in order to be contained within Cardiff controlled airspace. If unable to comply, notify ATC.